



SLOVENSKÁ 
sporiteľňa



INFORMATION / BULLETIN

National Orienteering Ranking Competition on Middle, Sprint and Long Distances

CENTRAL EUROPEAN SPRING ORIENTEERING MEETING 2015
8-th edition



Orienteering club KOBRA Bratislava in cooperation with municipality of Borský Mikuláš and the main partner - Slovenská sporiteľňa a.s. welcome the competitors in Borský Mikuláš on 8-th international orienteering competition CESOM 2015.

Please mind the following information for successful participation:

Date 28-th March, 2015 (Saturday morning) middle distance national ranking competition
28-th March, 2015 (Saturday afternoon) sprint national ranking competition
29-th March, 2015 (Sunday) national ranking competition on long distance

Classification Open day individual competitions with defined order of control points

Event Centre Borský Mikuláš – football stadium (see Map No.1 in the Appendix 1).

Parking Open area by football stadium (see Map No. 2 in the Appendix 1), please mind the orders of the organisers.

Registration 27-th March 2015 between 19.00 and 22.00 at the student dormitory (internát Obchodnej akadémie) Senica, Štúrova (ulica) street 141/32
28-th March 2015 between 07.30 and 09.00 in event centre, **any change requests are accepted only until 08.30**
29-th March 2015 between 08.00 and 09.00 in the event centre.

Categories The following changes were made to the category lists in the invitation:
Category M70-A was merged to M65-A due to small number of competitors, categories W70-A, M75-A and M80-A were cancelled.

Accomod **Sleeping on beds** is at student dormitory in Senica, Štúrova 141/32 (internát Obchodnej akadémie). The distance to event centre approx. 25 km (see Map No. 3 in the Appendix 1),
Sleeping in own sleeping bags – gym of elementary school Borský Mikuláš (see Map No. 2 in the Appendix 1).

It's possible to accomodate on Friday after registration (from 19.00) and on Saturday from 17.00. On Saturday between 9.00 and 17.00 the accomodations will be closed.

Please do not leave your personal belongings in the gym during the day. The club leaders are responsible for leaving the accomodation facilities clean and tidy.

Catering Buffet in the event centre, there are some restaurants nearby.

Start 000 28-th March 2015 10.00 middle,
28-th March 2015 15.30 sprint,
29-th March 2015 09.30 long
Blue ribbon marking.

Starting bibs All competitors have to wear starting numbers to make them visible, on their chest.

Descriptions The control point descriptions are printed on the map, in the event centre they will be available in printed form.
For M/W10, RD and N using descriptions in Slovak in event centre - but only pictograms printed on the maps!

WC Mobile toilets in the event centre.

Washing Limited in event centre.

Emb. areas Warm-up possible only in the event centre and on the marked way to start.

Distances	sleeping on beds – event centre	25 km,
	sleeping bags accomodation – event centre	3km,
	parking – event centre	300 m,
	event centre – middle start	1 300 m,
	event centre – middle finish	1 300 m,
	event centre – sprint start	1 300 m,
	event centre – sprint finish	1 300 m,
	event centre – long start	1 300 m,
	event centre – long finish	0 m.
	Parameters of courses – see Appendix 2	

Competitors can leave their clothes in a tent on Saturday (start and finish at the same place, 1 300 m from event centre).

Child. race At event centre both days, control points using images. Free start time between 000 – last startlist group of middle and long. Classical paper punching.

Free start The competitors of W/M10 and RD can start as they like, following the start officers orders. Possible start time 000 – last startlist group

Maps **middle** – Pri Zelenke, 1 : 10 000, E = 2,5 m, format A4
sprint – Trupových obora, 1 : 5 000, E = 2,5 m, format A4
long –
Ságelská studnička (1), 1 : 15 000, E = 2,5 m, format A3 for categories:
M21-E, M-20A, M21-B, M35-A, W21-E,
Ságelská studnička (2), 1 : 10 000, E = 2,5 m, format A3 for categories:
M-16A, M21-D, M50-A, M40-A, M45-A, M55-A, M65-A, W50-A, W45-A,
W55-A, W60-A, W-14A,
Ságelská studnička (3), 1 : 15 000, E = 2,5 m, format A4 for categories:
W-18A, M-18A, W21-B, W35-A,
Ságelská studnička (4), 1 : 10 000, E = 2,5 m, format A4 pre categories:
rest of the categories.

Middle and long: Authors E. Cigoš , Z. Lenhart and P. Matula, ISOM 2000 and P. Matula. Revision December 2014 by L. Barták and J. Wallner.
Sprint: Author P. Matula, ISSOM 2007 standard. Survey November 2014.

Laser print, 120g/m² paper.

The maps will be waterproof (transparent cover) for all competitions and categories.

Arriving competitors will have to leave their maps in their club bag until last start on Sunday. All club bags with maps can be handed over to club leaders after last start on Sunday.

Terrain Plain terrain with sand dunes, fine terrain details, runnable, pine forest. Dense network of paths, marshes or small lakes. Some wet parts with undergrowth and less runnable.

We recommend to use proper orienteering clothing for legs.

In the competition area there is an active surface sand-mine. The tracks won't cross the area of this object, but we ask you to be careful.

All courses on long cross a road with traffic – the crossing point is marked in the maps. The crossing is secured by the organisers, please be careful.

For long we recommend to access the last control point via an artificial bridge built for this purpose – will be marked on the maps appropriately.

Time limit	middle	120 minutes
	sprint	60 minutes
	long	180 minutes

Refreshment ESTIM iont drink in finish, water.

Long – courses above 60 minutes estimated time - water.

- First aid** In event centre
- Results** 29-th March 2015 at cca 13.30,
Intermediate results in the event centre
- Prizes** The first 3 competitors in each category (summary result of both competitions) win souvenir prizes.
The first three competitors of W21E and M21E category win financial prizes according to invitation.
- Org. comitee**
- | | | |
|----------------------|-------------------|--------|
| Competition Director | Štefan Máj | |
| Main referee | Lukáš Barták | |
| Course setting | Jozef Wallner | middle |
| | Karol Hierweg sr. | sprint |
| | Ondrej Piják | long |
| secretary | Paulína Májová | |
- Jury** will be set the first day of competition
- Protests** Protests can be issued to main referee with 10 EUR deposit according to rules
- Rules** The competition is held in accordance with SZOŠ rules.
- Attention** **All the competitors start at their own risk, with no possibility for a claim in case of injury happened during or as a cause of this competition.**
- Time-change** **Daylight-saving time begins during the night 28-th / 29-th March. 29-th at 2.00 the time changes to 3.00.**
- Other events** **There is another event organised in parallel with our event – International Slovak championships in enduro and enduro-cross. The courses of CESOM are prepared with aim not to collide with competitors of another event. The only possible issue is during our sprint competition – the start 000 could be rescheduled to 16.00 from 15.30. In case we will decide to take this action, we'll inform you all in advance.**
- Note** **Please note that due to this motorcycle race, the road between Šastín and Borský Mikuláš (No. III/20300) will be closed for all traffic, both on Saturday and Sunday from 9:30 to 15:00. When arriving from direction Kúty, please use detour along the roads No. II/500 II/590 (see Map No. 4 in the Appendix 1).**

The Organisers

**Orienteering club KOBRA Bratislava, municipality of Šajdíkove Humence
and Slovenská sporiteľňa, a.s.
wish you a pleasant stay and long-lasting impressions!**

Štefan Máj, competition director

Lukáš Barták, main referee

Appendix 1



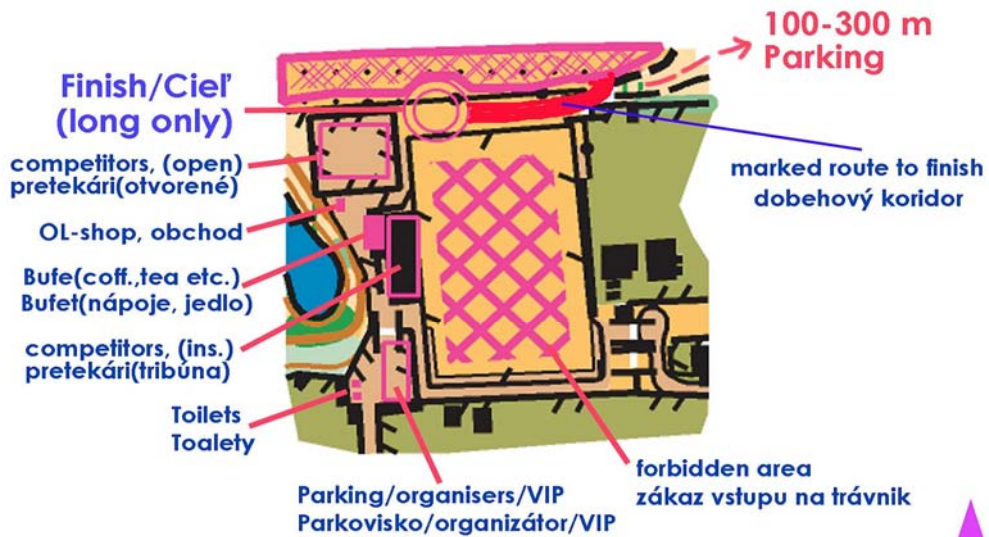
CESOM 2015, Borský Mikuláš

football stadium/futbalový štadión

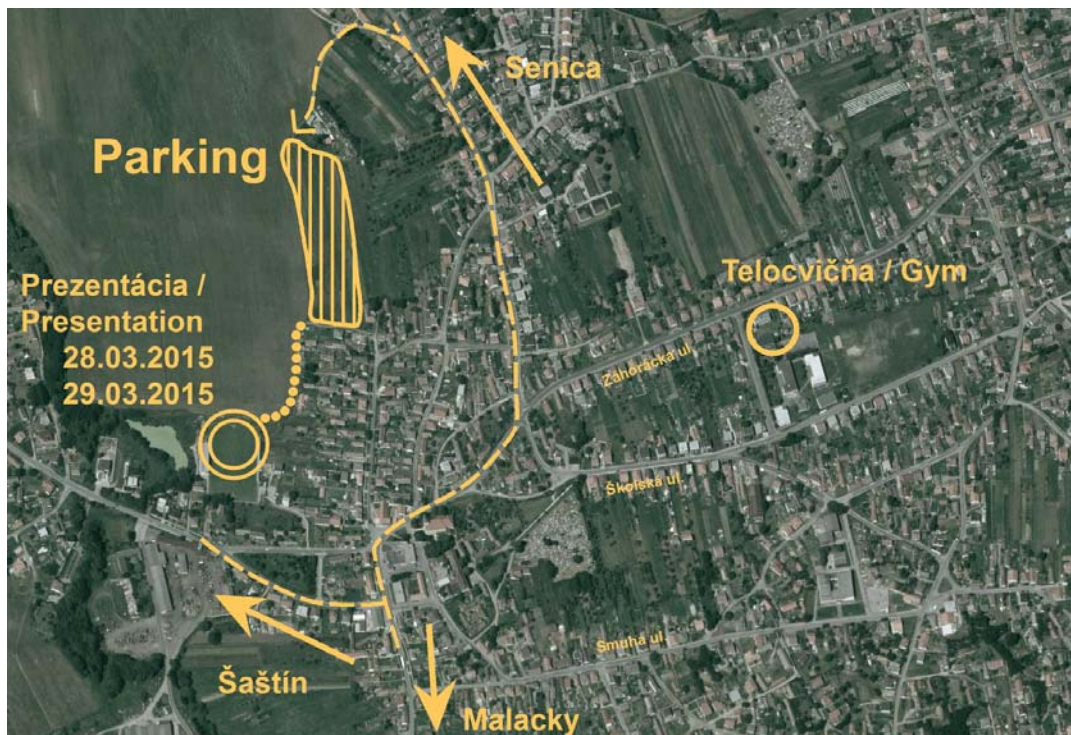
Event centre / WKZ / zhromaždisko (28.-29.3.)

registration (28.-29. 3.), SportIdent, results, prize giving

finish/cieľ (29. 3. 2015, long)



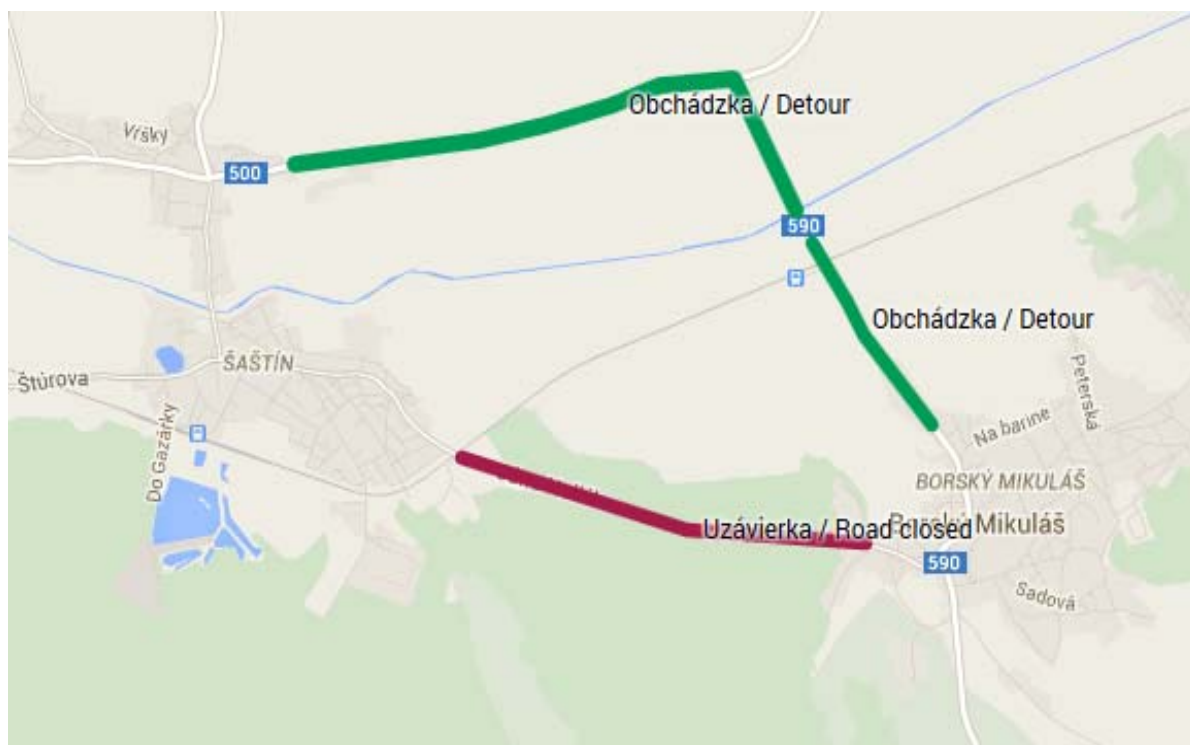
Map No. 1: Competition Centre – Football stadium



Map No. 2: Borský Mikuláš



Map No. 3: Accommodation in Students hostel in Senica



Map No. 4: Possible route to Event Centre from Kúty (highway D1)

Appendix 2

Parameters of courses

Kategória	Lenghts [km]			Climbing [m]			No. of Controls		
	E1	E2	E3	E1	E2	E3	E1	E2	E3
W-12A	1,9	1,5	3,1	10	15	20	6	8	9
W-14A	2,7	1,5	4,2	15	15	25	10	9	10
W-16A	3,3	1,7	5,3	15	20	75	12	11	13
W-18A	4,1	1,7	7,6	35	20	80	17	12	17
W21-E	5,9	2,6	11,1	50	35	120	23	14	19
W21-B	3,9	1,9	7,5	30	25	80	15	13	13
W35-A	4,4	1,9	7,5	30	25	80	18	13	13
W40-A	4,1	1,9	6,7	35	25	55	17	13	15
W45-A	4,0	1,8	5,9	25	25	50	14	13	13
W50-A	3,4	1,8	5,9	25	25	50	12	13	13
W55-A	3,0	1,7	5	20	20	45	12	11	15
W60-A	3,0	1,7	5	20	20	45	12	11	15
W65-A	2,3	1,5	3,6	15	15	30	10	9	12
M-12A	1,9	1,5	3,1	10	15	20	6	9	9
M-14A	3,3	1,7	5,3	15	20	75	12	11	13
M-16A	3,9	1,9	8,2	30	25	85	15	13	19
M-18A	4,4	2,6	10,9	30	35	105	18	14	20
M-20A	5,9	2,6	11,7	50	35	120	23	14	20
M21-E	7,0	3,3	18,9	80	45	150	27	16	30
M21-B	5,4	2,7	11,7	45	35	120	20	15	20
M21-D	4,1	2,1	8,2	35	30	85	17	14	19
M35-A	5,9	2,7	11,2	50	35	110	23	15	21
M40-A	4,7	2,7	10,9	40	35	105	19	15	26
M45-A	4,4	2,4	10,9	35	30	105	17	14	26
M50-A	4,4	2,4	8,2	30	30	85	18	14	19
M55-A	4,3	2,1	7,8	30	30	80	17	14	15
M60-A	4,0	2,1	6,7	25	30	55	14	14	15
M65-A	2,9	1,8	5,9	20	25	50	13	12	13
M70-A	2,3	1,8	5,0	20	25	45	10	12	15
W-10	1,9	1,2	2,1	10	10	20	7	8	8
M-10	1,9	1,2	2,1	10	10	20	7	8	8
RD	1,9	1,2	2,1	10	10	20	7	8	8
K3	3,4	1,7	3,6	25	20	30	12	12	12
N	2,2	1,5	3,3	15	15	20	8	9	9
Children race	max. 1km	N/A	max. 1km	N/A	N/A	N/A	9	N/A	8